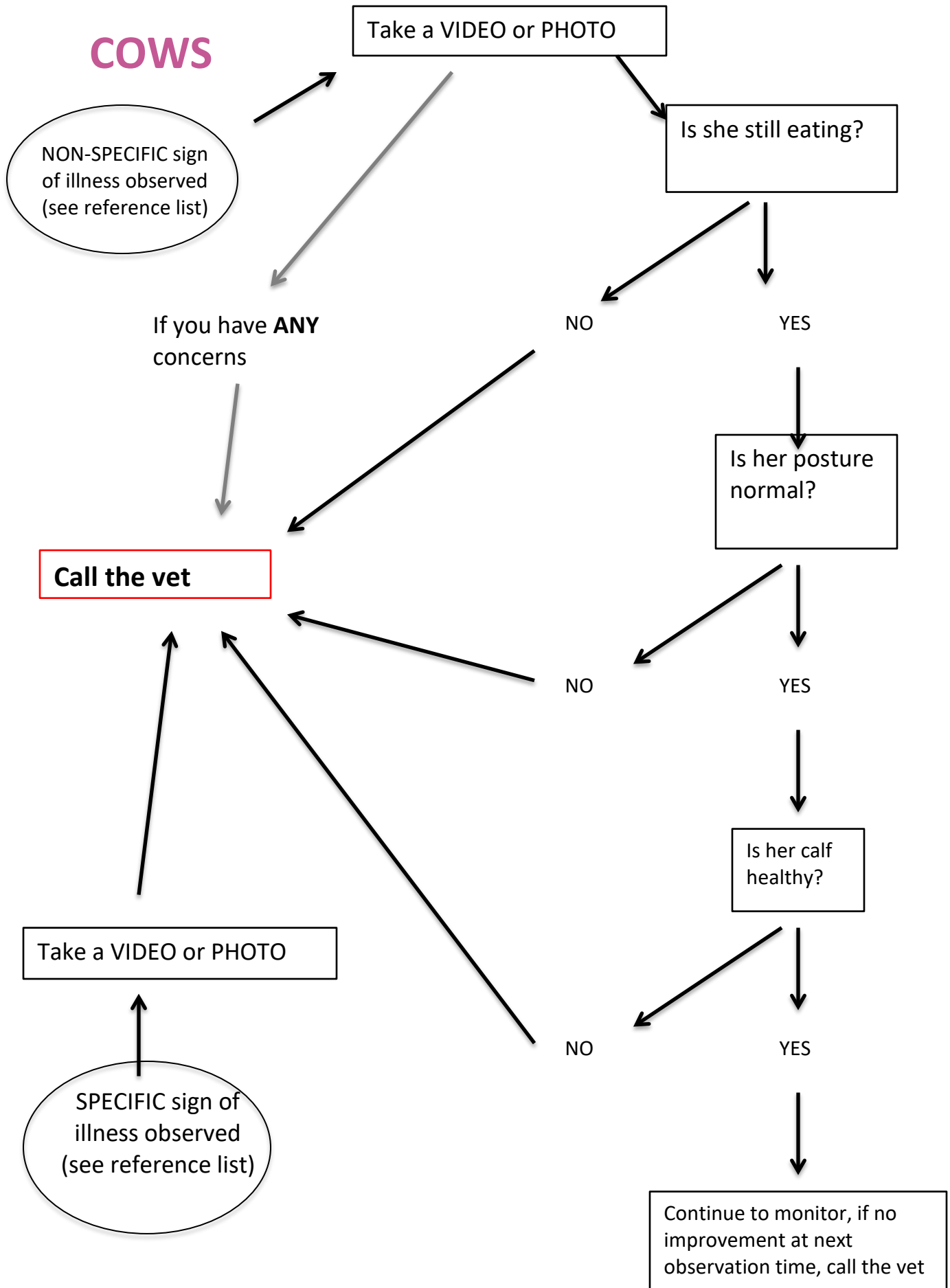


COWS



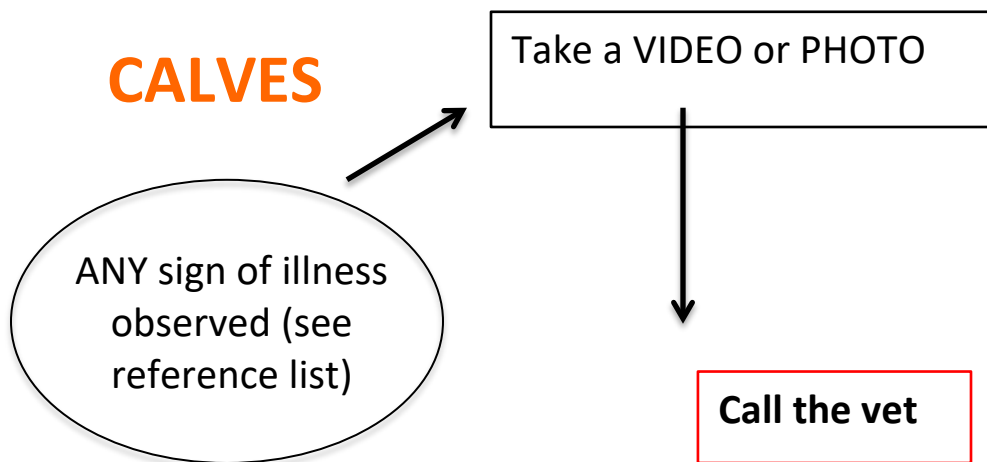
COWS

NON-SPECIFIC signs of illness

- not eating
- losing body condition
- separated from the group or no visual observation with group
- no 'flight' when approached
- increased or decreased activity
- rapid breathing
- observed drinking more than normal
- abnormal posture
- coughing
- diarrhea/fecal staining
- vocalizing
- abnormal behaviours or postures
 - lying down flat
 - standing with head down
 - neck extended
 - open mouth
 - legs spread
 - kicking or scratching self
 - rapid breathing
 - drooling

SPECIFIC signs of illness

- discharge from nose, eyes, vulva
- 'stuff' hanging out of rear after calving - membranes
- bad odour
- obvious swellings, wounds, or injuries
- overly swollen udder after calving
- not allowing calf to nurse



Signs of illness

- difficulty to raise head or to stand
- shivering, weakness, incoordination
- difficulty with or reduced number of nursing attempts
- loose feces, changes in fecal colour or volume, straining to defecate or urinate
- discharge from eyes, nose, mouth, anus, prepuce/vulva,
- swollen navel
- does not keep up with cow
- vocalizing
- any other abnormal observation